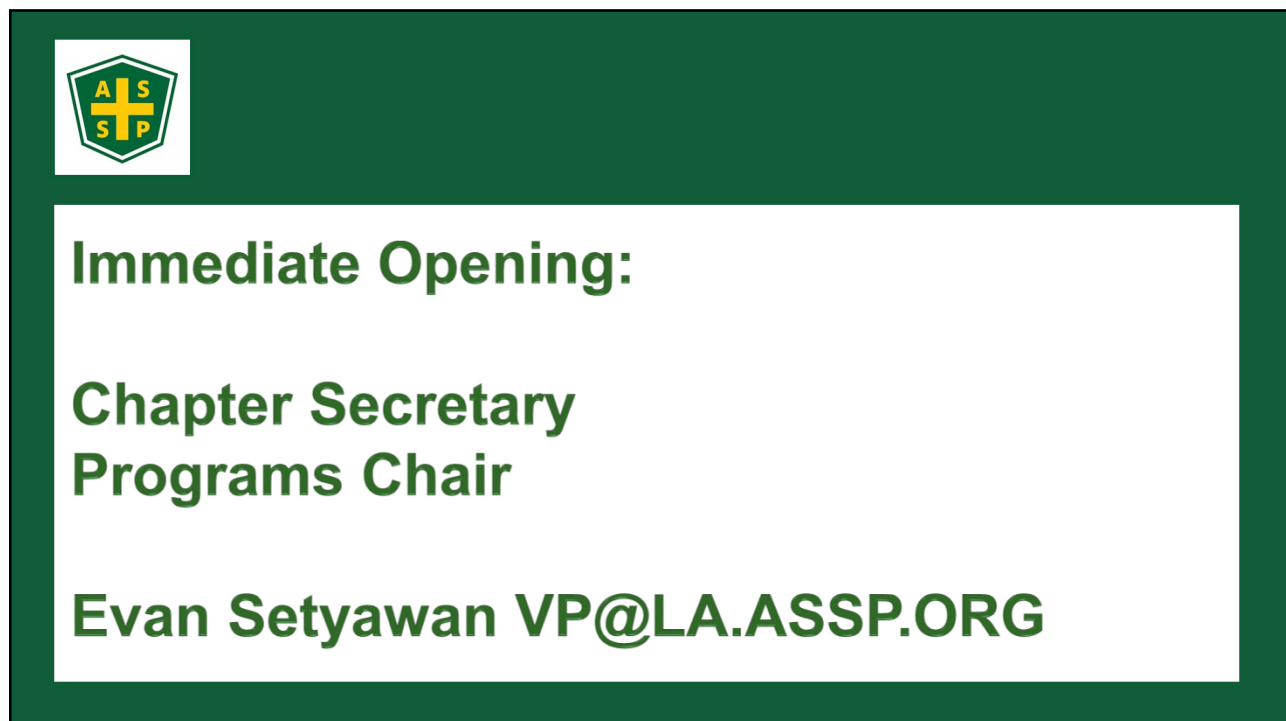



A presentation slide with a green border. The top half features a background image of a city skyline at sunset, partially covered by a green overlay with yellow diagonal stripes on the left. The ASSP Los Angeles Chapter logo is positioned in the upper left of the image area. The bottom half of the slide is a white rectangle containing the title text.

 AMERICAN SOCIETY OF
SAFETY PROFESSIONALS
Los Angeles Chapter

Technical Meeting January 10, 2022

1

A presentation slide with a solid green background. In the top left corner is the ASSP logo. The main content is contained within a white rectangular box, which includes the text for the immediate opening, the roles of the speaker, and their contact information.



Immediate Opening:


**Chapter Secretary
Programs Chair**


Evan Setyawan VP@LA.ASSP.ORG

2

Cal/OSHA 101

Ray Acree
Area Manager / DOSH Consultation Services Branch


 **State of California**
Department of
Industrial Relations


 **State of California**
Gavin Newsom
Governor

3

Agenda

- Who is Cal/OSHA?
- Enforcement Basics
- Enforcement vs Consultation
- Reporting
- Regulatory update for 2023
- How to Follow Proposed Regulations
- Where to get help

 **State of California**
Department of
Industrial Relations

 **STATE OF CALIFORNIA**
CAL OSHA
DEPARTMENT OF INDUSTRIAL RELATIONS

4

Who is Cal/OSHA

- Occupational Safety and Health Standards Board
- Cal/OSHA Enforcement
- Occupational Safety and Health Appeals Board
- Cal/OSHA Consultation Services Branch

CAUTION

IF YOU THINK OSHA
IS A SMALL TOWN IN
WISCONSIN, YOU'RE
IN TROUBLE



5

Cal/OSHA Enforcement Units

- Enforcement
- High Hazard Enforcement Unit
- Labor Enforcement Task Force
- Process Safety Management Unit
- Mining and Tunneling Unit
- Pressure Vessel Unit
- Crane Unit
- Asbestos and Carcinogen Unit



6

Cal/OSHA Enforcement

- Investigates Complaints, Accidents and Fatalities
- Conduct High Hazard Inspections (2X National DART Average)
- Conduct Inspections with regards to Special Emphasis Programs (e.g. Heat Illness, Confined Space, Trenching and Excavations)



7

Cal/OSHA Public Safety Units

- Amusement Ride and Tramway Unit
- Elevator Unit



8

Labor Enforcement Task Force



Who is the LETF?

- Labor Commissioner
- Employment Development Department
- Contractor State License Board
- Cal/OSHA
- LETF Hotline: (855) 297-5322

Target the Underground Economy for:

- Tax evasion
- Failure to carry workers' compensation coverage
- Cash pay
- Failure to provide employees with breaks and adequate facilities
- Wage theft
- Failure to ensure a safe work environment



9

Cal/OSHA Enforcement Basics

- Penalties per § 336. Assessment of Civil Penalties for:
 - Regulatory, General, Serious, Willful and Repeat hazards – Up to \$142,692



10

Cal/OSHA Consultation Services Branch

- Free to Employers
- No Citations and Penalties
- Confidential and Separate from Enforcement
- Designed to assist employers in learning what is needed for compliance with Title 8 regulations.
- Safety Program Review and Assistance
- Review Losses and Look at Possible Solutions
- Walkthrough of Work Site
- Report Summary Provided to Management
- Correct Hazards
- Assist Public and Private Sector Employers



11

Enforcement Vs. Consultation

Enforcement

- Citations with Monetary Penalties
- Reactive Approach to Safety and Health
- Lots of Potential Litigation



Consultation

- No Citations
- No Penalties
- Chance to reduce your risk, workers' compensation costs, and loss workdays by employees
- Proactive Approach
- Invite your Workers' Comp to be part of the solution



12

Benefits of Being Proactive with Consultation

- Reduce costs from having to hire and train new employees when someone is injured
- Reduce down time due to injuries and illnesses
- Avoid unnecessary legal costs
- Avoid increases in your workers' compensation costs
- Chance to earn recognition and exemption through our Partnership Programs. Golden Gate, SHARP and VPP



13

Reporting Serious Injuries

Report Serious Injuries within 8 hours

- Serious Injury –
- Inpatient hospitalization for other than medical observation or diagnostic testing,
- An employee suffers an amputation,
- An employee suffers the loss of an eye,
- Any serious degree of permanent disfigurement,
- But does not include any injury or illness or death caused by an accident on a public street or highway, unless the accident occurred in a construction zone.



14

Helpful Websites

- Cal/OSHA
 - <http://www.dir.ca.gov/dosh/dosh1.html>
- Cal/OSHA Standards Board
 - <http://www.dir.ca.gov/oshab/oshab.html>
- Federal OSHA
 - <http://www.osha.gov>
- Cal/OSHA Consultation
 - <http://www.dir.ca.gov/dosh/consultation.html>



15

dir.ca.gov

State of California Department of Industrial Relations

Navigation: Labor Law, Cal/OSHA - Safety & Health, Workers' Comp, Self Insurance, Apprenticeship, Director's Office, Boards

Featured Topics: Workers' Comp Reform, Refinery Safety, Fighting the Underground Economy

Workers | Employers

16

Regulatory Update (2023)

New COVID-19 standard

Changes to First-Aid standards GISO & CSO

Changes to fall protection trigger heights for construction

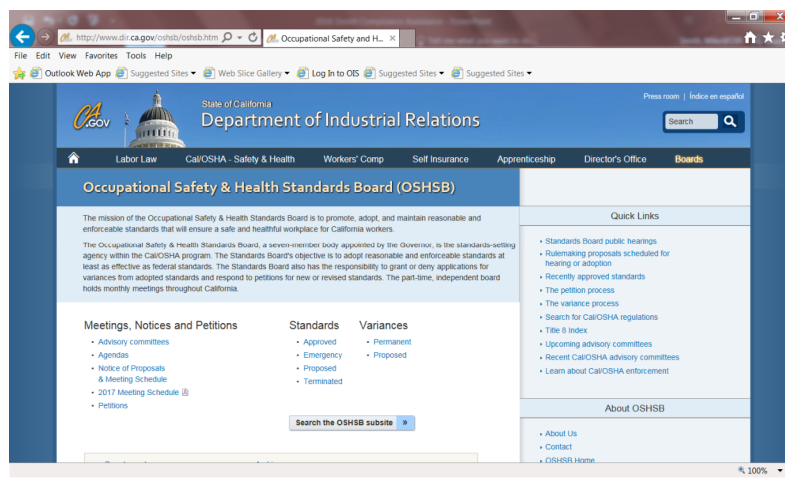
New Violence Prevention standard

New Indoor Heat Illness Prevention standard

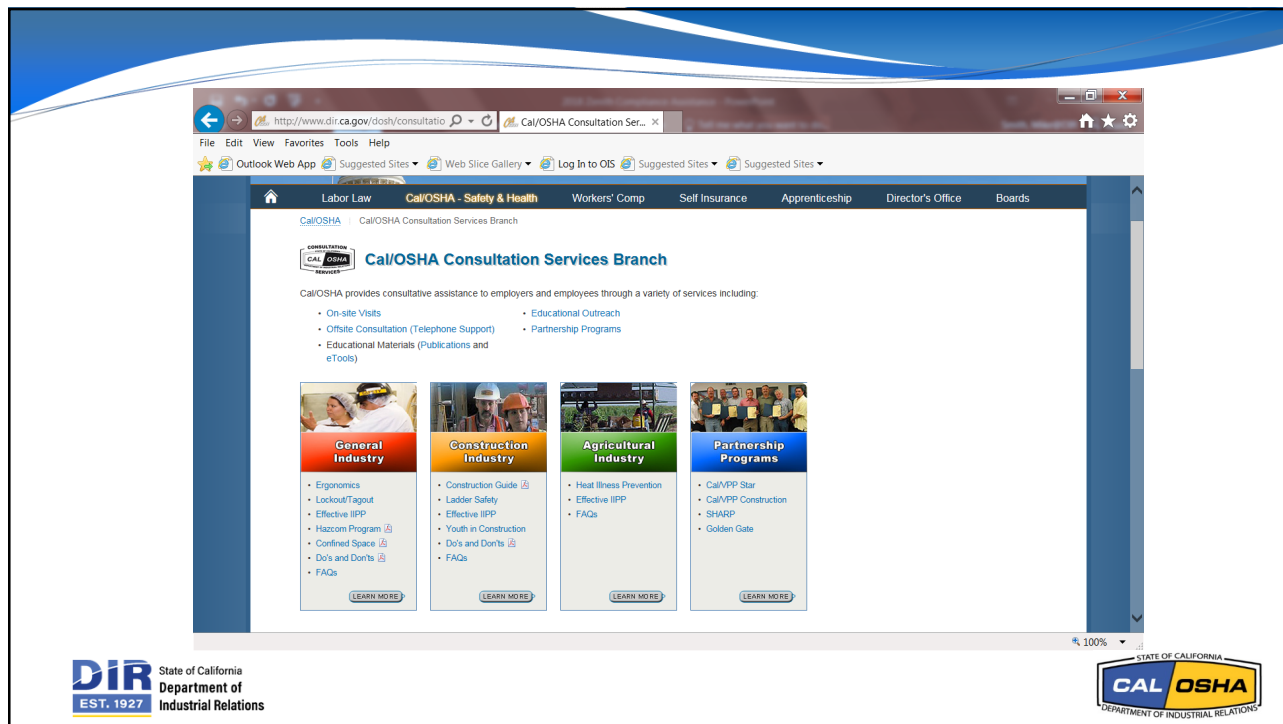


17

How to Follow Proposed Regulations and Changes to Regulations



18



19

Consultation Offices

1. San Francisco Bay Area
1515 Clay Street Ste. 1103
Oakland, CA 94612
(510) 622-2891

2. Northern California
2424 Arden Way Ste. 410
Sacramento, CA 95825
(916) 263-0704

3. Central Valley
2550 Mariposa Mall, Room 2005
Fresno, CA 93721
(559) 445-6800

4. San Fernando Valley
6150 Van Nuys Boulevard Ste. 307
Van Nuys, CA 91401
(818) 901-5754

5. Los Angeles, Orange
1 Centerpointe Drive Suite 150
La Palma, CA 90623
(714) 562-5525

6. San Bernardino
464 W. 4th Street Ste. 339
San Bernardino, CA 92401
(909) 383-4567

7. San Diego
7575 Metropolitan Drive Ste. 2
San Diego, CA 92108
(619) 767-2060

Cal/OSHA Consultation Area Offices

1. Oakland (510) 622-2891
2. Sacramento (916) 263-0704
3. Fresno (559) 445-6800
4. San Fernando Valley (818) 901-5754
5. La Palma (714) 562-5525
6. San Bernardino (909) 383-4567
7. San Diego (619) 767-2060

20

Questions?



21



State of California
Department of
Industrial Relations

4 Area Manager + 12 Assc Safety Engineers



Spam Box



2nd Tuesday of Every Month



Partnership Training Event

22

